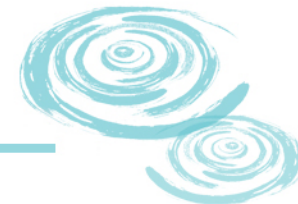


Network Platform Makes SP More Brilliant



Platform Brief Introduction



DPI System



Network Management Platform

Do you want to...

- ✚ **Win more Customers**
- ✚ **Offer Better UE**
- ✚ **Develop More Services**



Do you want to win more customers



✚ Win more customers

- where to find ?
- How to locate ?
- What policy ?

✚ We provide you :

- ▣ Leading detection technology and know more about customers;
- ▣ Accurate analysis of the data, precisely locate the target user;
- ▣ Recommend to you the most appropriate marketing strategy;

Supply Better UE



- ✚ Offer better UE
- UE low
- Network Congestion
- Malicious content, harmful website
- BW and traffic Distribution

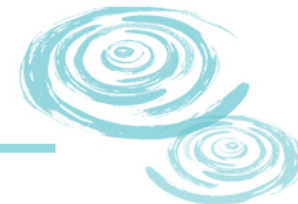
- ✚ We provide you :
 - Rich page push technology and comprehensive service navigation;
 - Limitations of P2P application, Reduce pressure of network bandwidth;
 - Resource control, anti-virus wall
 - Network flow analysis

Develop More Value-added Services



- ✚ **Develop more services**
- **Difficult to know user requirement**
- **Find suitable customers ?**
- **Precise marketing?**

- ✚ **We provide you :**
- **Analysis of user-level data**
- **Customer classification**
- **Make effective business strategies for you**



Platform Brief Introduction



DPI System

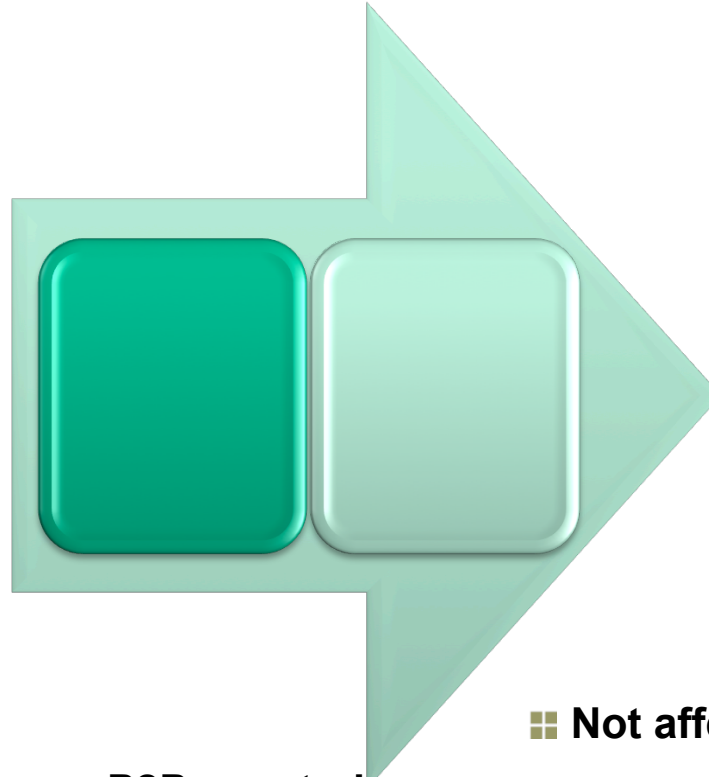
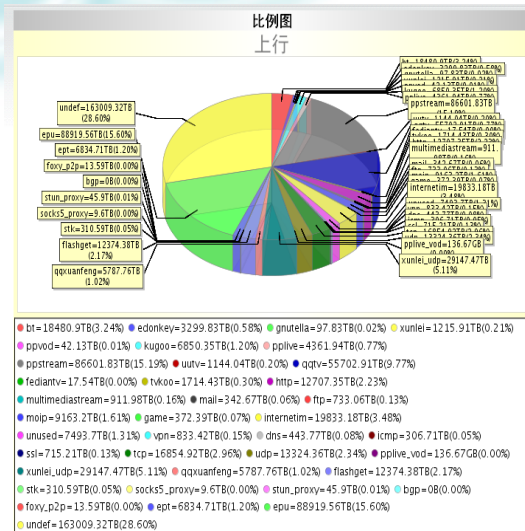


Network Management Platform

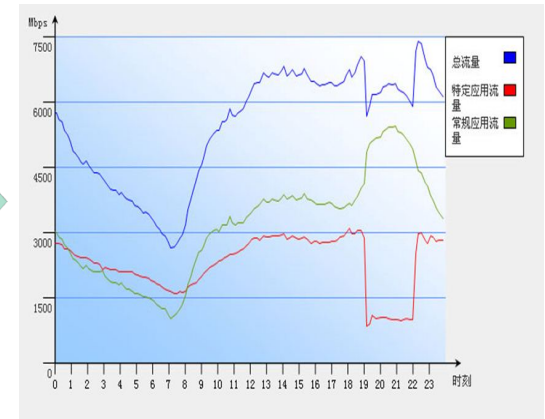
DPI System Function Module

Business Promotion	Mining Potential Market	Network Monitoring
Welcome page WEB info push	VOIP monitoring	Service analyze Traffic analyze
Refinement Operation	Value-add service	Special Application
Preference Analyze Website Ranking	Anti-virus firewall	Resource control

Analysis & control of P2P Protocol-Server



P2P control result



- P2P users consume large amounts of BW
- Bandwidth expansion still can not solve the problem

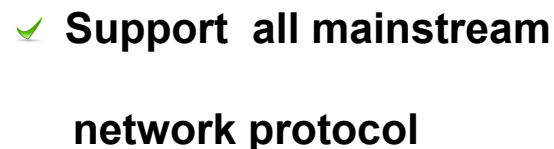
P2P constrain :

- ✓ Time-Based
- ✓ Group-Based
- ✓ P2P type-Based
- ✓ BTS/cell-Based
- ✓ User--Based

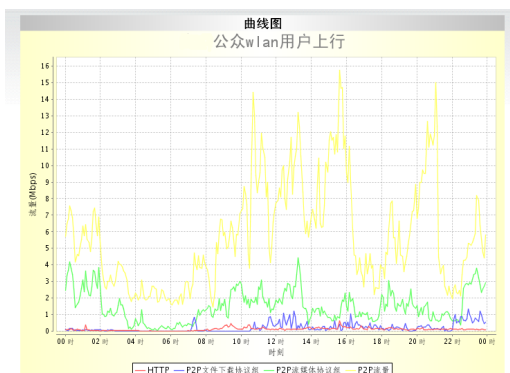
- Not affect the current network
- Effective control of P2P application
- Improve the network congestion
- Improve UE
- Reduce expansion investment

User-level Traffic Display

Protocol Analysis



✔ Supply VPN traffic statistics



- 
- 中国通信服务
CHINA COMSERVICE

Limits on Internet Access -Server

Deny a URL access

Deny a single IP access

White list management

阻断IP策略 添加

策略名:

地区:

源IP地址(段):

目标IP地址(段):

阻断比例:

封堵日期:

封堵时间:

备注:

确定 重置 取消

Flexible Strategy

序号	主机	地区	备注	封堵日期	封堵时间	加入时间	操作
1	www.cnjb.net	全省	新增封堵	永久阻断	00:00 - 23:59	2010-10-07 16:36:11	修改 删除
2	www.jenqiy.com	全省	新增封堵	永久阻断	00:00 - 23:59	2010-10-07 16:35:44	修改 删除
3	www.suzhoufang.com	全省	新增封堵	永久阻断	00:00 - 23:59	2010-10-07 16:35:18	修改 删除
4	www.sangbo.com	全省	新增封堵	永久阻断	00:00 - 23:59	2010-10-07 16:34:55	修改 删除
5	www.xm-fiq15f8f02a3hvx1b.com	全省	新增封堵	永久阻断	00:00 - 23:59	2010-10-07 16:34:04	修改 删除
6	www.naukida.net	全省	新增封堵	永久阻断	00:00 - 23:59	2010-10-07 16:33:43	修改 删除
7	www.0512go.cn	全省	新增封堵	永久阻断	00:00 - 23:59	2010-10-07 16:33:15	修改 删除
8	www.healcom.com	全省	新增封堵	永久阻断	00:00 - 23:59	2010-10-07 16:32:52	修改 删除
9	www.yunshun.net	全省	新增封堵	永久阻断	00:00 - 23:59	2010-10-07 16:32:29	修改 删除
10	www.szjinfan.com	全省	新增封堵	永久阻断	00:00 - 23:59	2010-10-07 16:31:57	修改 删除
11	www.pcbvia.com	全省	新增封堵	永久阻断	00:00 - 23:59	2010-10-07 16:31:27	修改 删除
12	www.ou66.cn	全省	新增封堵	永久阻断	00:00 - 23:59	2010-10-07 16:31:05	修改 删除
13	www.kar20512.com	全省	新增封堵	永久阻断	00:00 - 23:59	2010-10-07 16:30:45	修改 删除
14	www.pobhz.cn	全省	新增封堵	永久阻断	00:00 - 23:59	2010-10-07 16:30:19	修改 删除
15	www.shunzhuwei.com	全省	新增封堵	永久阻断	00:00 - 23:59	2010-10-07 16:29:37	修改 删除

共 179 条记录 页次: 1/12 每页: 15 条 1 2 3 4 5 6 7 8 9 10 11 12 Go

阻断主机添加

有限公司 阻断IP列表								
序号	IP地址	阻断比例	地区	备注	封堵日期	封堵时间段	加入时间	操作
1	111.175.242.23	100%			永久阻断	00:00 - 23:59	2011-05-31 14:38:06	修改 删除
2	222.177.25.7	100%			永久阻断	00:01 - 18:01	2009-06-24 13:41:23	修改 删除
3	221.231.45.214	100%			2009-05-26 - 2009-05-26 20:45 - 22:45	2009-05-24 18:02:21	修改 删除	
4	221.231.45.212	100%			2009-05-26 - 2009-05-26 20:45 - 22:45	2009-05-24 18:02:00	修改 删除	
5	221.231.45.201	100%			2009-05-26 - 2009-05-26 20:45 - 22:45	2009-05-24 18:01:37	修改 删除	
6	221.130.44.232	100%			2009-05-26 - 2009-05-26 20:45 - 22:45	2009-05-24 18:01:12	修改 删除	
7	64.436.39	100%			2009-05-26 - 2009-05-26 20:45 - 22:45	2009-05-24 18:00:42	修改 删除	
8	221.231.45.214	100%			2009-05-25 - 2009-05-25 16:00 - 18:00	2009-05-24 18:00:18	修改 删除	
9	221.231.45.212	100%			2009-05-25 - 2009-05-25 16:00 - 18:00	2009-05-24 17:59:56	修改 删除	
10	221.231.45.201	100%			2009-05-25 - 2009-05-25 16:00 - 18:00	2009-05-24 17:59:32	修改 删除	
11	221.130.44.232	100%			2009-05-25 - 2009-05-25 16:00 - 18:00	2009-05-24 17:59:11	修改 删除	
12	64.436.39	100%			2009-05-25 - 2009-05-25 16:00 - 18:00	2009-05-24 17:58:51	修改 删除	
13	221.231.45.214	100%			2009-05-26 - 2009-05-26 20:45 - 22:45	2009-05-24 17:57:46	修改 删除	
14	221.231.45.212	100%			2009-05-26 - 2009-05-26 20:45 - 22:45	2009-05-24 17:57:27	修改 删除	
15	221.231.45.201	100%			2009-05-26 - 2009-05-26 20:45 - 22:45	2009-05-24 17:57:03	修改 删除	

共 31 条记录 页次: 1/3 每页: 15 条 1 2 3 4 5 6 7 8 9 10 11 12 Go

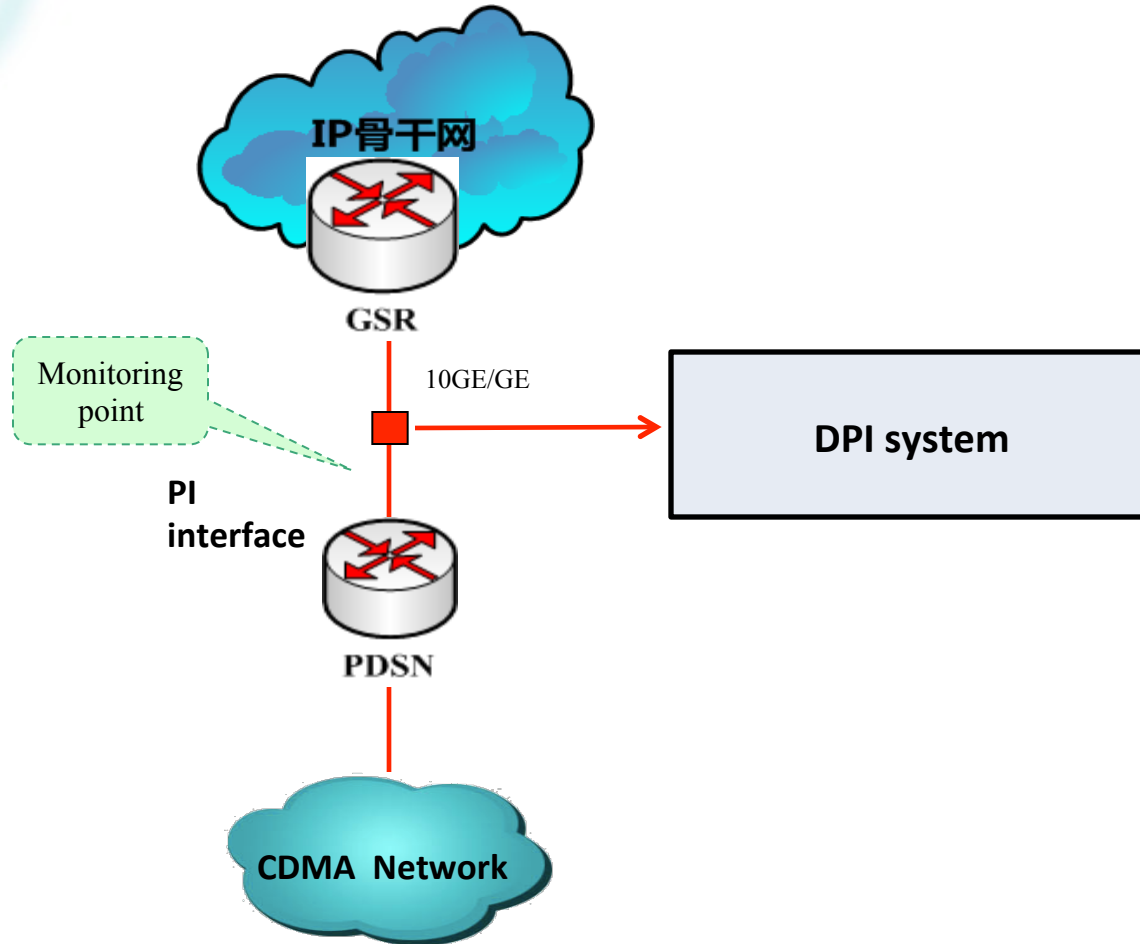
阻断IP添加

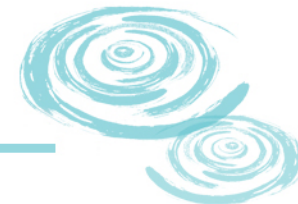
序号	URL	地区	备注	封堵日期	封堵时间	加入时间	操作
1	http://111.175.242.23/105030qps/mecia/normal_outter.swf	全省		永久阻断	00:00 - 23:59	2011-05-31 15:45:57	修改 删除

共 1 条记录 页次: 1/1 每页: 15 条 1 1 Go

阻断URL添加

Logical Deployment Structure of DPI System





Platform Brief Introduction

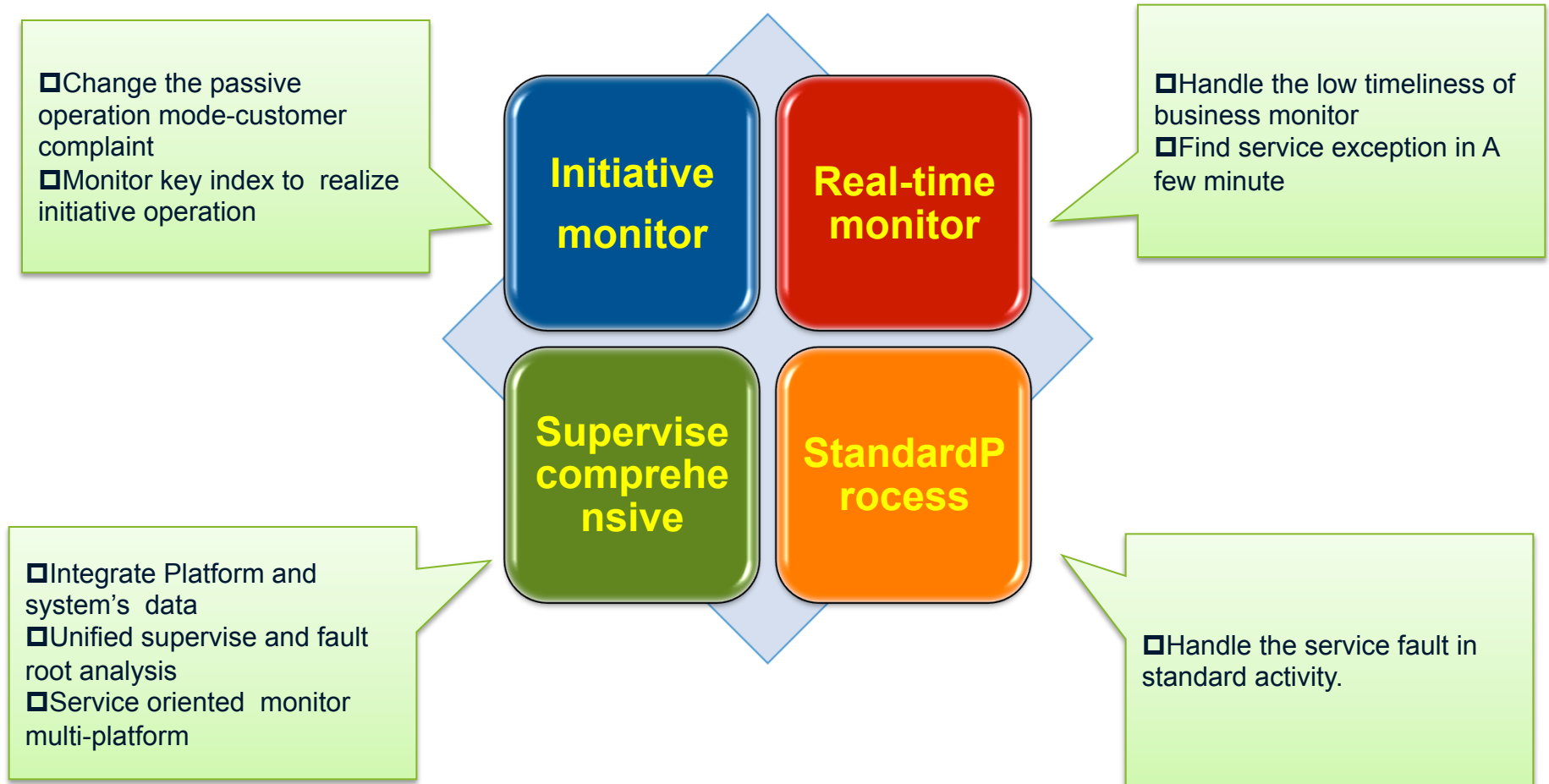
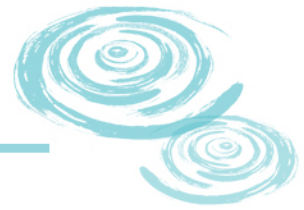


DPI System



Network Management Platform

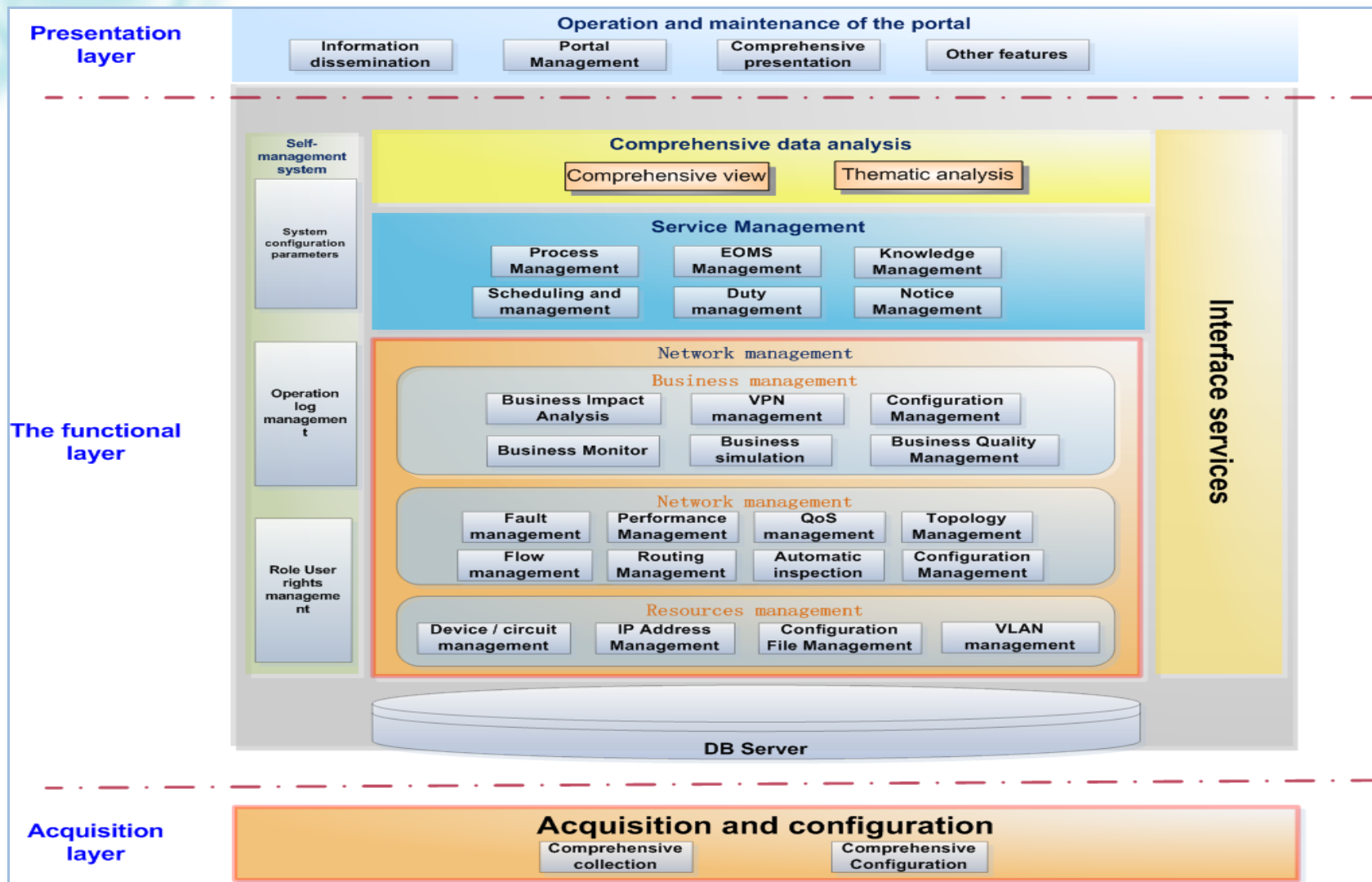
Bring The Value To Operator



Management Domain

- u **Management domain including:**
- u **VPN integrated management**
- u **CE,IP RAN CE(LTE),PDSN integrated management**
- u **CS equipment on-offline state management**
- u **PS support system and equipment on-offline state management**

System architecture



Resource Management

Management domain:

- Hierarchical management(area、node)
- Router、Switch、PDSN、Host etc.

Function:

- Network device resource auto discovery and update
- Host resource info management
- Circuit resource management
- IP add management
- AS number management
- VLAN management
- Spare parts management
- OS version management

The interface displays a list of network devices with the following columns: 设备名称 (Device Name), 设备型号 (Device Model), OS版本 (OS Version), 所在节点 (Location Node), Loopback 地址 (Loopback Address), and 有无更新 (Update Status). The devices listed are primarily Alcatel 7750SR12 and 7750SR7 routers.

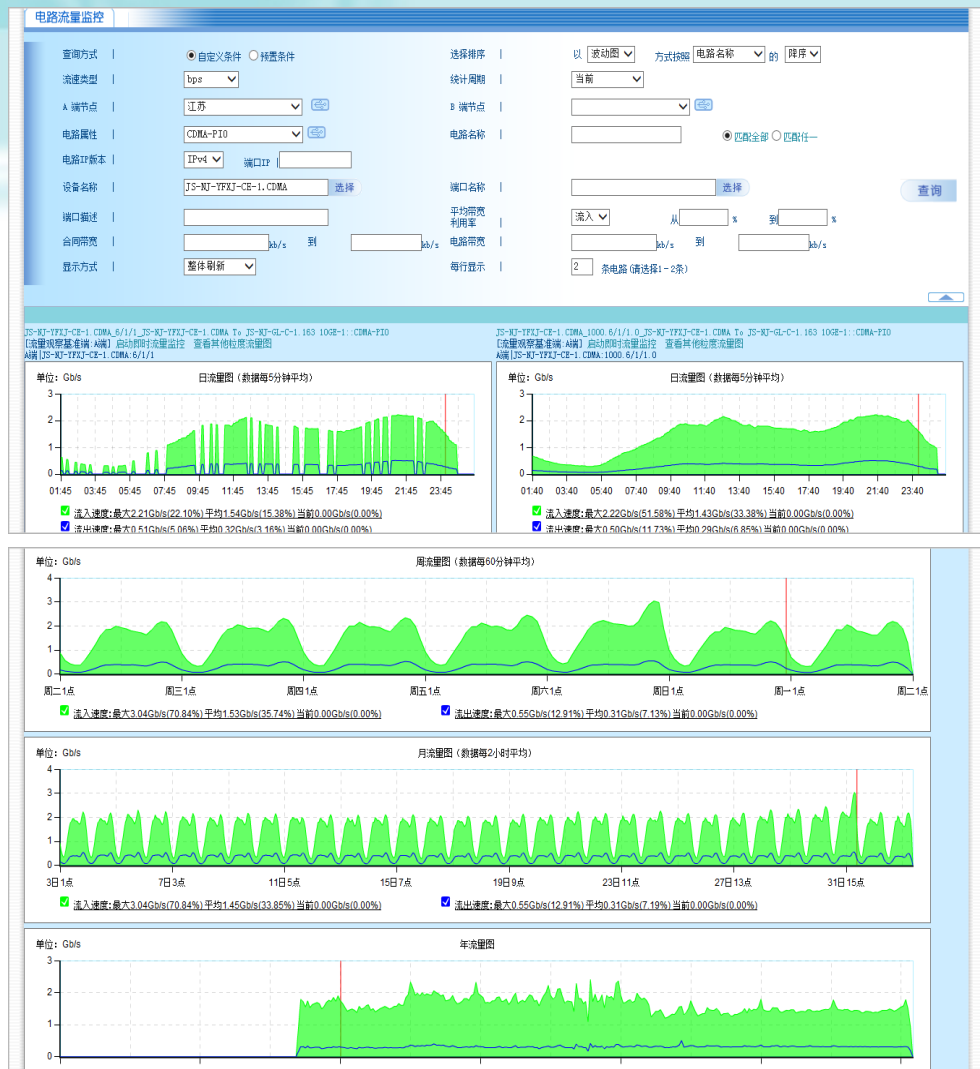
设备名称	设备型号	OS版本	所在节点	Loopback 地址	有无更新
JS-MJ-GL-CE-7.COMA	ALCATEL-7750SR12	TIMOS-C-7.0.R13	南京	115.168.131.85	无
JS-MJ-GL-CE-8.COMA	ALCATEL-7750SR12	TIMOS-C-7.0.R13	南京	115.168.131.86	无
JS-MJ-TPLJ-CE-1.COMA	ALCATEL-7750SR12	TIMOS-C-7.0.R13	南京	115.168.128.178	无
JS-MJ-GL-CE-4.COMA	ALCATEL-7750SR12	C-9.0.R14	南京	115.168.128.181	无
JS-CZ-YDL-CE-1.COMA	ALCATEL-7750SR7	C-7.0.R13	常州	115.168.128.182	无
JS-CZ-YDL-CE-2.COMA	ALCATEL-7750SR7	C-7.0.R13	常州	115.168.128.183	无
JS-CZ-CJL-CE-3.COMA	ALCATEL-7750SR7	C-7.0.R13	常州	115.168.128.184	无
JS-HA-GCJ-CE-1.COMA	ALCATEL-7750SR7	C-7.0.R13	淮安	115.168.128.186	无
JS-LYG-MLI-CE-1.COMA	ALCATEL-7750SR7	C-7.0.R13	连云港	115.168.128.188	无
JS-LYG-LML-CE-2.COMA	ALCATEL-7750SR7	C-7.0.R13	连云港	115.168.128.189	无

The '当前信息' section provides detailed information about the selected device (JS-MJ-TPLJ-CE-1.COMA). It includes basic information like location and OS version, and a table showing the status of various ports.

设备名称	Loopback地址	设备类型	设备型号	设备属性	IOS版本	检查时间	最初变化时间	确认时间
JS-MJ-TPLJ-CE-1.COMA	115.168.128.178	IP网络路由器	ALCATEL-7750SR12	CE路由器	TIMOS-C-7.0.R13	2013-08-20 01:19:51		2013-08-20 01:19:51

槽位号	占用状态	机槽类型
1	已占用	ion3-xp
10	已占用	ion3-xp
2	已占用	ion3-xp
3	已占用	ion3-xp
4	已占用	ion3-xp
5	已占用	ion3-xp

Traffic Management



- Real time traffic monitoring for port and link
- Automatic traffic monitoring configuration management and acquisition of load balancing
- Flow alarm management
- Port traffic query in a variety of ways
- Efficient statistical query and report output

Maintenance matrix



Auto Routing Inspection

- Routing inspection script management
- Once/periodical routing inspection
- Inspection range、set the items of routing inspection

Routing Inspection Exhibition

- Healthy Status
- Routing inspection log
- Routing inspection daily report
- History query

THANK YOU !